

, Dyffryn Ardudwy LL44 2DR £40,000

A rare opportunity to purchase approximately 4.1 acres of low lying rough grazing pasture land in an easily accessible location in the coastal village of Dyffryn Ardudwy between the sand dunes and the mountains.

The land is predominantly pasture with trees and shrubs and has two access points. It is suitable for grazing, as a small holding or for wildlife potential.

The land sits within the Snowdonia National Park.

- Low lying rough pasture land for sale
- Easily accessible
- In coastal village of Dyffryn Ardudwy on the heart of the Snowdonia National Park
- Approx 4.1 acres
- Ideal for small holding, grazing, wildlife potential
- Note: a public footpath crosses the field

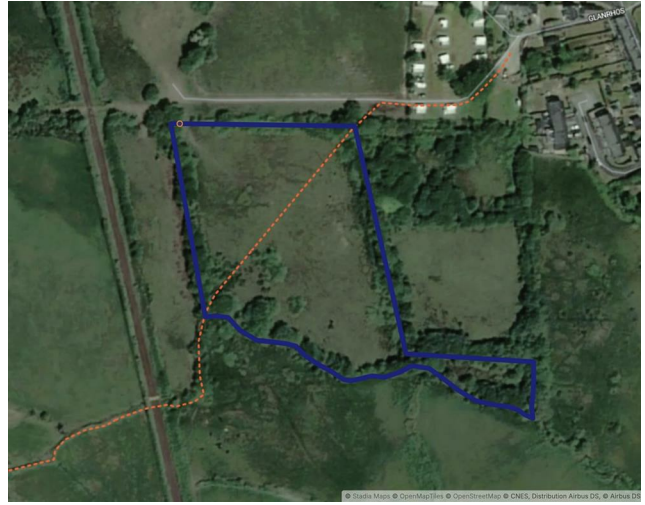


MONOPOLY
BUY ■ SELL ■ RENT

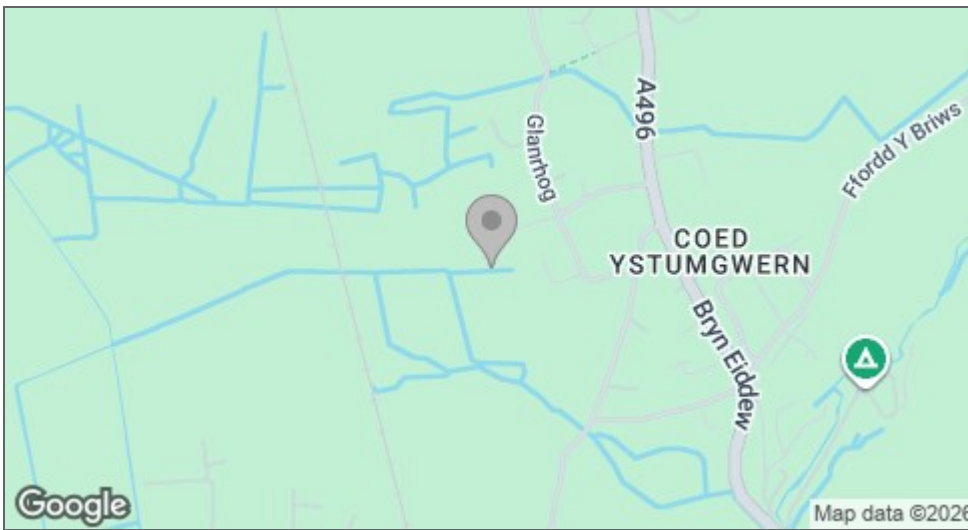
01341 475000
gwynedd@monopolybuysellrent.co.uk
www.monopolybuysellrent.co.uk











Energy Efficiency Rating		Current	Potential
Very energy efficient - lower running costs			
(92 plus) A			
(81-91) B			
(69-80) C			
(55-68) D			
(39-54) E			
(21-38) F			
(1-20) G			
Not energy efficient - higher running costs			
England & Wales		EU Directive 2002/91/EC	
Environmental Impact (CO ₂) Rating		Current	Potential
Very environmentally friendly - lower CO ₂ emissions			
(92 plus) A			
(81-91) B			
(69-80) C			
(55-68) D			
(39-54) E			
(21-38) F			
(1-20) G			
Not environmentally friendly - higher CO ₂ emissions			
England & Wales		EU Directive 2002/91/EC	

MONEY LAUNDERING REGULATIONS 2003

intending purchasers will be asked to produce identification and proof of financial status when an offer is received. We would ask for your co-operation in order that there will be no delay in agreeing the sale.

THE PROPERTY MISDESCRIPTIONS ACT 1991

The Agent has not tested any apparatus, equipment, fixtures and fittings or services and so cannot verify that they are in working order or fit for the purpose. A Buyer is advised to obtain verification from their Solicitor or Surveyor. References to the Tenure of a Property are based on information supplied by the Seller. The Agent has not had sight of the title documents. A Buyer is advised to obtain verification from their Solicitor. You are advised to check the availability of this property before travelling any distance to view. We have taken every precaution to ensure that these details are accurate and not misleading. If there is any point which is of particular importance to you, please contact us and we will provide any information you require. This is advisable, particularly if you intend to travel some distance to view the property. The mention of any appliances and services within these details does not imply that they are in full and efficient working order. These particulars are in draft form awaiting Vendors confirmation of their accuracy. These details must therefore be taken as a guide only and approved details should be requested from the agents.

